

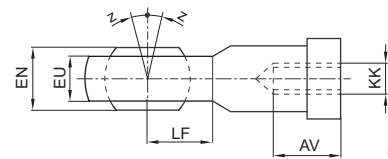
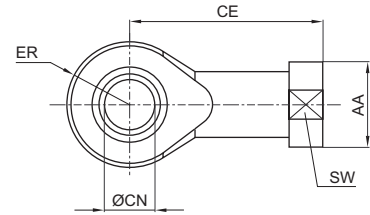
Piston rod cylinders → Standard cylinders

ISO 6432, series MNI
Accessories

Ball eye rod end AP6



00105172



00126602

Part No.	KK	AA	AV min.	CE	Ø CN H7	EN -0,1	ER	EU max.	LF	SW	Z [°] max.
1822124000	M4	12	8	27	5	8	9	7.5	9	9	4
1822124001	M6	13	9	30	6	9	10	7.5	10	11	4
1822124002	M8	16	12	36	8	12	12	9.5	12	14	4
1822124003	M10x1,25	19	15	43	10	14	14	11.5	14	17	4

Part No.	Material	Surface	Weight [kg]							
1822124000	Steel	galvanized	0.02							
1822124001	Steel	galvanized	0.03							
1822124002	Steel	galvanized	0.05							
1822124003	Steel	galvanized	0.07							