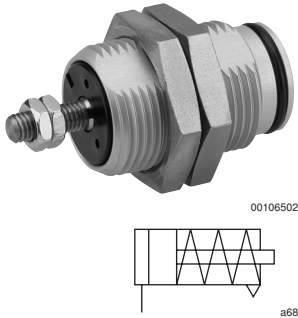


Piston rod cylinders → Mini cylinder

Screw-in cylinder, Series SWN

► Ø 6 - 16 mm ► Single-acting, retracted without pressure



Working pressure min./max.	2 bar / 8 bar
Ambient temperature min./max.	-20 °C / +80 °C
Medium temperature min./max.	-20 °C / +80 °C
Medium	Compressed air
Max. particle size	5 µm
Oil content of compressed air	0 mg/m ³ - 1 mg/m ³
Pressure for determining piston forces	6 bar

Materials:

Cylinder tube	Aluminum, anodized
Piston rod	Stainless steel
Front cover	Polyoxymethylene
Nut for piston rod	Steel, galvanized

Technical Remarks

- The pressure dew point must be at least 15 °C under ambient and medium temperature and may not exceed 3 °C.
- The oil content of air pressure must remain constant during the life cycle.
- Use only the approved oils from Bosch Rexroth, see chapter „Technical information“.

Piston Ø	[mm]	6	10	16		
Extending piston force	[N]	15	38	100		
Spring force min. - max.	[N]	2 - 3.3	3.5 - 5.8	9 - 18		

	Piston Ø	6	10	16		
	Stroke 5	0822406900	0822406910	0822406920		
	10	0822406901	0822406911	0822406921		
	15	0822406902	0822406912	0822406922		

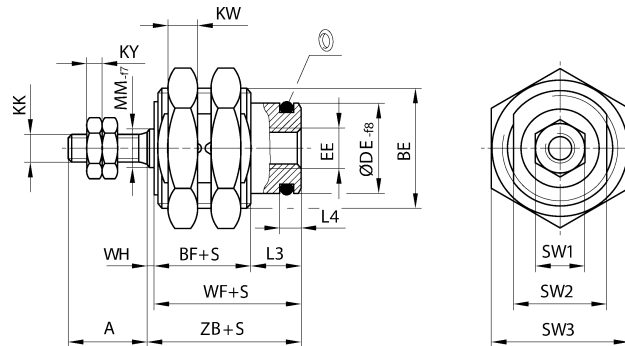
Weight [kg]	Piston Ø	6	10	16		
	Stroke 5	0.01	0.018	0.04		
	10	0.01	0.02	0.043		
	15	0.011	0.022	0.046		

Piston rod cylinders → Mini cylinder

Screw-in cylinder, Series SWN

► Ø 6 - 16 mm ► Single-acting, retracted without pressure

Dimensions



00106504

S = stroke

Piston Ø	S	A	BE	BF	DE 1)	EE	KK	KW	KY	L3	L4	MM	SW1
6	5	7	M10x1	7.5	7.6	M5	M3	3.5	1.8	6	2.5	3.5	5.5
6	10/15	7	M10x1	9.5	7.6	M5	M3	3.5	1.8	6	2.5	3.5	5.5
10	5/10/15	10	M16x1,5	8.5	12	M5	M4	4	2.2	7	3	5	7
16	5/10/15	12	M22x1,5	12	18.5	M5	M5	5	2.7	7	3.5	6	8

Piston Ø	SW2	SW3	WF ±0,2	WH	ZB								
6	9	13	13.5	1.5	15								
6	9	13	15.5	1.5	17								
10	13	19	15.5	2	17.5								
16	19	27	18.5	2	20.5								

1) Recommended receiving bore DE^{h7}